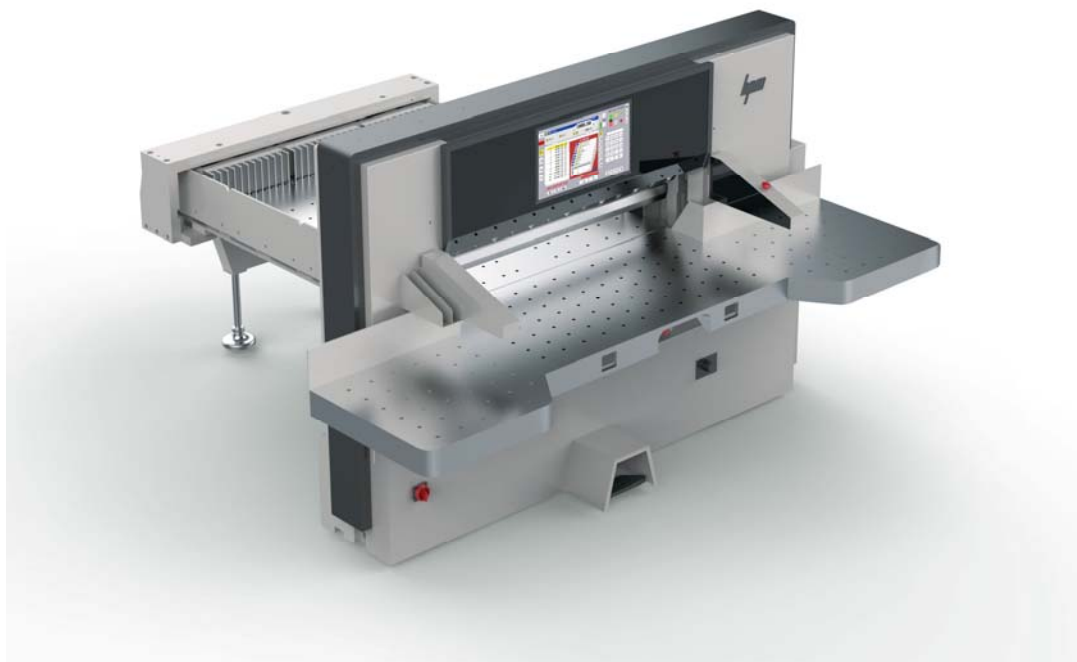


HPM115S19 Program Control Paper Cutter Spec.:



Computer System

1. Full touch display screen, made by Japan-based Sharp;
2. German operating system is equipped to meet the operating habits of domestic users and guarantee convenient operation;
3. Mainboard adopted industrial chip imported from Italy;
4. Highly sensitive of the touch screen has real-time responses;
5. Equipped with signal amplification function and excellent anti-interference to avoid dimension errors due to drive aging;
6. Dimension in front of knife will be displayed to facilitate sizes for cutting;
7. Program storage capacity is 300 programs, each program can store 200 items cutting size.
8. computing with four operations, output programs in real time;
9. Equipment has relative positioning function relative to current position;
10. With minimal compensation, it can rapidly correct program errors due to paper distortions;
11. It can rapidly find out user-defined number of cutters;
12. Each air cushion program can be programmed;
13. The time of automatic cutting signals can be set up and cancelled; single automatic cutting can be started by inputting a password;
14. High and low speeds can be manually switched over rapidly;
15. A paper-pushing program is equipped to push paper automatically so as to guarantee safety and enhance operation efficiency;
16. Automatic cutting can be made as per instructed programming;

17. Display precision is 0.01mm;
18. Multiple languages such as Chinese and English are available for order management;
19. Manual and automatic operations can be rapidly switched over to enhance efficiency to the greatest extent;
20. Voice messages are equipped to make users judge equipment conditions correctly.

Machine Performance

- Chrome-plated for main worktable and side tables, and has the device of air cushion, which is convenient for backgauge running.
- Adopts high stiffness linear guides and high precision gapless lead screw to ensure backgauge accuracy and effectively improve the anti-impact capability against unidirectional impact.
- Adopts double hydraulic system which is composed of two hydraulic circuits. When press the footpedal, the hydraulic oil goes through the primary hydraulic circuit made up of reducing valve and spillover valve, and gives the cutting paper micro pressure. The pressure is only several kilograms and can't hurt operator's hands. At the time of cutting paper, put thousands of kilograms of high pressure to ensure the cutting quality and safe operation.
- Uses Japan NSK bearing of low maintenance, Italy oil pump and German DICHTOMATIK sealing elements. Main electronic units are from French TE and Japanese ORMON brands.
- It adopts inside electronic knife locker, which can effectively avoid knife-sliding.
- Adopts main motor overloading protection safety device for cutting, infrared photoelectric protection, and buttons by two hands safety devices.
- The large components adopt HT250 cast iron and has accepted vibration stress relief, so they won't deform after been used for long time.
- It has mechanical assistance device for knife replacement, illuminated working surface/optical cutting line indicator and a tool box with tools, operating instruction, computer manual and spare parts list. It has total 2 standard steel knives.

• Configuration Listing

No.	Name	Brand, specification & model	Origin of brand
1	Background LCD	19"Color touch screen	China
2	Backgauge position motor	PANASONIC servo motor	Japan
3	Sensor	Autonics	Korea
4	Guarding motor	TE	France

5	Air switch	TE	France
6	AC Contactor	TE	France
7	Miniature relay	TE	France
8	Switching power supply	TE	France
9	Press-button	TE	France
10	Power switch	TAYEE	China
11	Ball screw	High accurate	Korea
12	Linear guider	High accurate double linear guides	Taiwan
13	Hydraulic system	Combination Valve	Italy
14	Combination Valve	VIS	Italy
15	Bearing	NSK	Japan
16	Column valves	Hydraforce	USA

Technical Parameter

Model	Unit	92	115	130	137	168	188
Max.Cutting Width	cm	92	115	130	137	168	188
	inch	36.2	45.3	51.2	53.9	66.1	74
Max.Cutting Length	cm	92	115	130	145	168	188
	inch	36.2	45.3	51.2	57.1	66.1	74
Max. Cutting Height	mm	120	165	165	210	210	210
	inch	4.7	6.5	6.5	6.5	6.5	6.5
Min. Cutting Size (without false clam plate)	mm	25	30	30	30	30	30
	inch	1	1.2	1.2	1.2	1.2	1.2
Min. Cutting Size (with false clamp plate)	mm	90	90	90	90	90	90
	inch	3.5	3.5	3.5	3.5	3.5	3.5
Front Table Length	cm	63.2	71.5	73	73	75	75
	inch	24.9	28.1	28.7	28.7	29.5	29.5
Max.Clamp Pressure	N	35000	40000	40000	45000	60000	70000
Max. Cutting Speed	time/min	45	46	46	46	46	46
Main Motor	KW	3	4	4	4	8.5	8.5
Net Weight	Kg	2200	3700	3900	4100	6200	6600
Gross Weight	Kg	2500	4100	4300	4500	7000	7400
Packing Size(LxWxH)	cm	228x140	285x190	285x190	310x190	360x205	380*205
		x185	x210	x210	x210	x220	*220